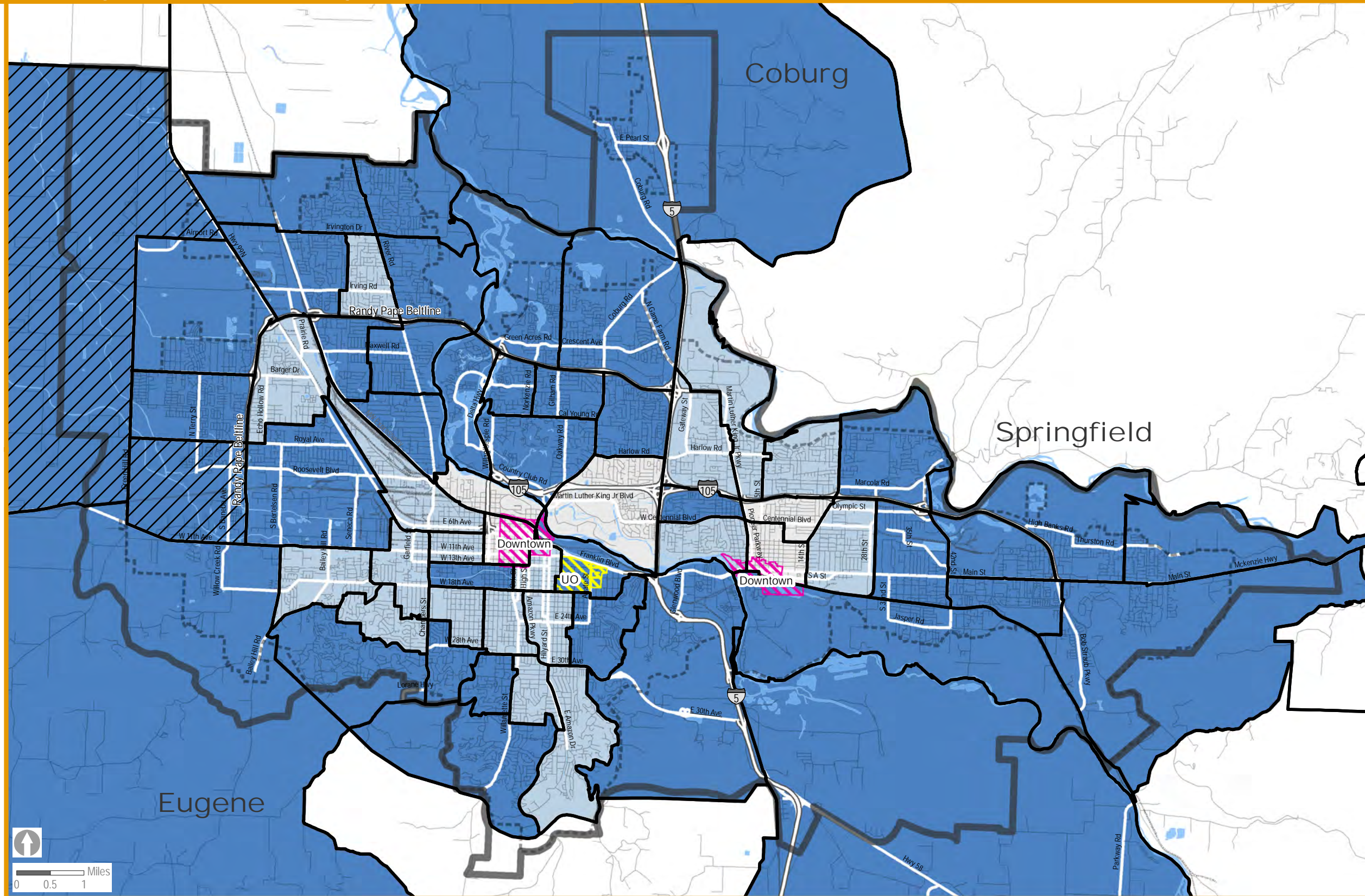


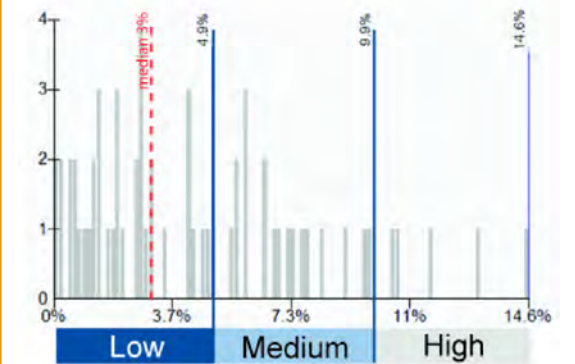
Equity & Opportunity Assessment Transportation Access

Type of Commute: Public Transit

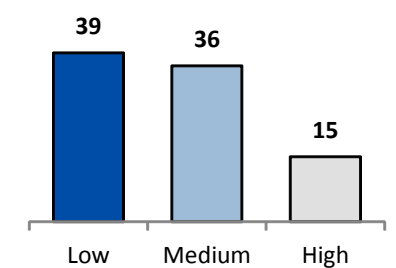


This map shows how people age 16 and over commute to work. About 4% of the population use public transit for their commute in the Metropolitan Planning Organization census tracts.

The full range of data for each map has been divided into thirds to create low, medium, and high percentage categories. A histogram is also included to show that the data is not necessarily distributed equally across these three categories. About 16% of the population that used public transit are in the 39 tracts in the lowest percentage category.



The chart below shows the number of tracts in the Metropolitan Planning Organization Area that have low, medium, and high percentages.



Map date: 9/11/13 Map data: U.S. Census Bureau, ACS 2007-11, Table B08301
 Caution: This map is based on imprecise source data, subject to change, and for general reference only. The work that provided the basis for this map was supported by funding under an award with the U.S. Department of Housing and Urban Development. The substance and findings of the work are dedicated to the public. The author and publisher are solely responsible for the accuracy of the statements and interpretations contained in this publication. Such interpretations do not necessarily reflect the views of the Government.

- Census 2010 Tracts
- Metropolitan Planning Organization Area boundary
- Urban Growth Boundaries

Percent of the Population that Use Public Transit for Commute

- Low: 0% - 4.9%
- Medium: 5% - 9.9%
- High: 10% - 14.6%
- Tracts Where Public Transit is Not Used in Commute